

# Heveningham Hall Concours 2026

## GA Fly-In Instructions

Heveningham Fly-In Procedures – FIXED WING	Page 2
Fly-In Landing Strip (Image)	Page 3
View of RWYs 21/03 and 24/06, turning base to Final Rwy 21	Page 4
Heveningham Fly-In Procedures – HELI	Page 5
Helicopter FATO Join/Departure	Page 6
Helicopter Parking	Page 7

Name	<b>Heveningham Hall FW 03/21</b>	OS Map Number	156
Contact	M: 07796 878052 E: john.david.hill@btinternet.com	OS Grid Reference	TM 349727
Day/Night	Day only	Lighting	Nil
Description	Private Estate. Parkland.	Category	Private
Display times/Airfield closure		15:30-16:00	
Comments	<ul style="list-style-type: none"> <li>• This document is for INFO only</li> <li>• Aircraft Commander is responsible for the safe operation of their aircraft.</li> <li>• PPR Mandatory – Filed through <a href="https://helipaddy.com/hp-flyin/heveningham-concours-2026-plane/">https://helipaddy.com/hp-flyin/heveningham-concours-2026-plane/</a></li> <li>• PPR Submission confirms understanding of procedures and key risks detailed in this document</li> <li>• No Arrival or Departure during the NOTAM Air Display period 1530-1600L</li> <li>• Fire cover 1000-1800L</li> </ul>		

## Fixed Wing Strip

## Navigation Information

Runway	03/21	Location	N52 18.16 E 001 26.54
Surface	Grass Slope downhill on 03	Site Elevation (AMSL)	158ft
		Fire Cover	27/28 June
Available Distance	530m x 30m (derived from mapping)	Fuel	Nil
Edge Marking	Chalk White Lines	Nearest Diversion	EGSM/EGSH
Radio	Heveningham Radio - 131.450MHz		

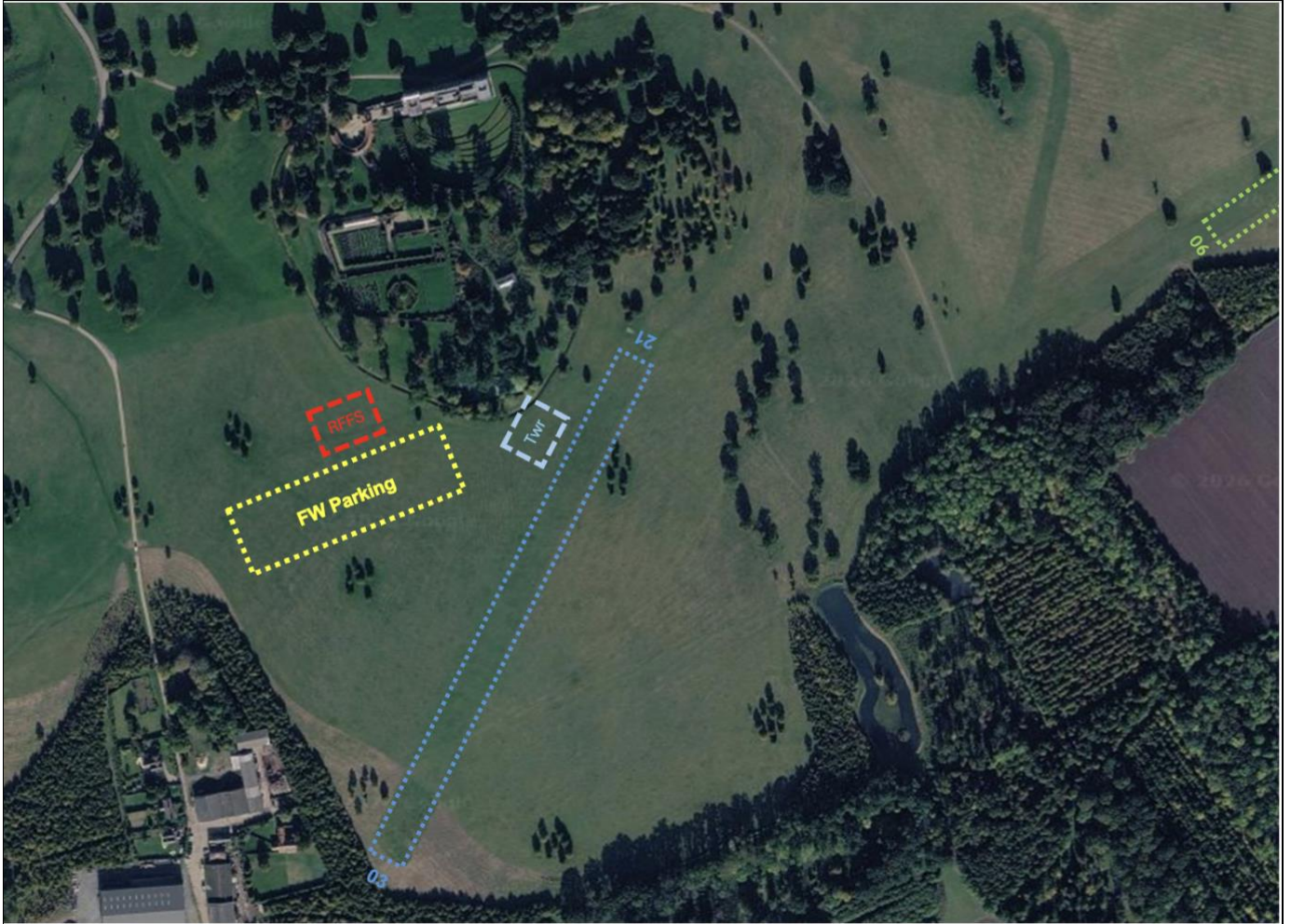
**PROCEDURES:**

- All joins are to be overhead at 1500ft QNH
- Circuit height is 1000ft QNH
- In the event of go around, the circuit pattern is to be rejoined
- Circuit direction is:
  - Rwy 03 – L/H
  - Rwy 21 – R/H
- All inbound aircraft should remain clear of Event Area until 2-way communication has been established with Heveningham Radio. **Do not proceed** without 2-way communication.
- After parking, report to the Tower for entry ticket scan.
- Tiedowns, chocks and covers are to be provided by individual crew.
- Aircraft must not start engines or taxi from parking areas without contacting Heveningham Radio.
- Marshall guidance provided.
- Arrivals/Departures: 10.00-18.00, daily. **Not permitted** during Air display 15.30-16.00.

**HAZARDS:**

- **AVOID OVERFLIGHT OF ALL LOCAL VILLAGES.**
- CAUTION: Rwy 03/21 is in the Rwy 06 undershoot/Rwy 24 overshoot.
- CAUTION: Windshear conditions may occur due to proximity of treelines on both RWY 03/21.
- Rwy 06/24 is for helicopters and display aircraft only – **Fly-In aircraft are not to use it.**
- Trees on both approaches. Use offset approach, if required.
- Runway surface purposed on agricultural land; Commanders are to be aware of the risk of wildlife-induced surface disturbance.

Fly-In Landing Strip



See next page for 'View of RWYs 21/03 and 24/06, turning base to Final Rwy 21'

View of RWYs 21/03 and 24/06, turning base to Finals Rwy 21



Name	Heveningham Hall RW FATO 06/24	OS Map Number	156
Contact	M: 07795 165303 – Tom Partrick	OS Grid Reference	TM 349727
Day/Night	Day only	Lighting	Nil
Description	Private Estate. Parkland.	Category	Private
Display times/Airfield closure		15:30-16:00	

Comments	<ul style="list-style-type: none"> <li>• This document is for INFO only</li> <li>• Aircraft Commander is responsible for the safe operation of their aircraft.</li> <li>• PPR Mandatory – Filed through <a href="https://helipaddy.com/hp-flyin/heveningham-concours-2026-heli/">https://helipaddy.com/hp-flyin/heveningham-concours-2026-heli/</a></li> <li>• PPR submission confirms understanding of procedures and key risks detailed in this document</li> <li>• No Arrival or Departure during the NOTAM Air Display period 1530-1600L</li> <li>• Fire cover 1000-1800L</li> </ul>
----------	--

Helicopter FATO		Navigation Information	
FATO	06/24	Location	N52 18.31 E 001 27.39
Surface	Grass	Site Elevation (AMSL)	161ft
		Fire Cover	27/28 June
FATO Distance	400m x 20m (Derived from mapping)	Fuel	Nil
Edge Marking	Chalk White Line	Nearest Diversion	EGSM/EGSH
Radio	Heveningham Radio – 131.450MHz		

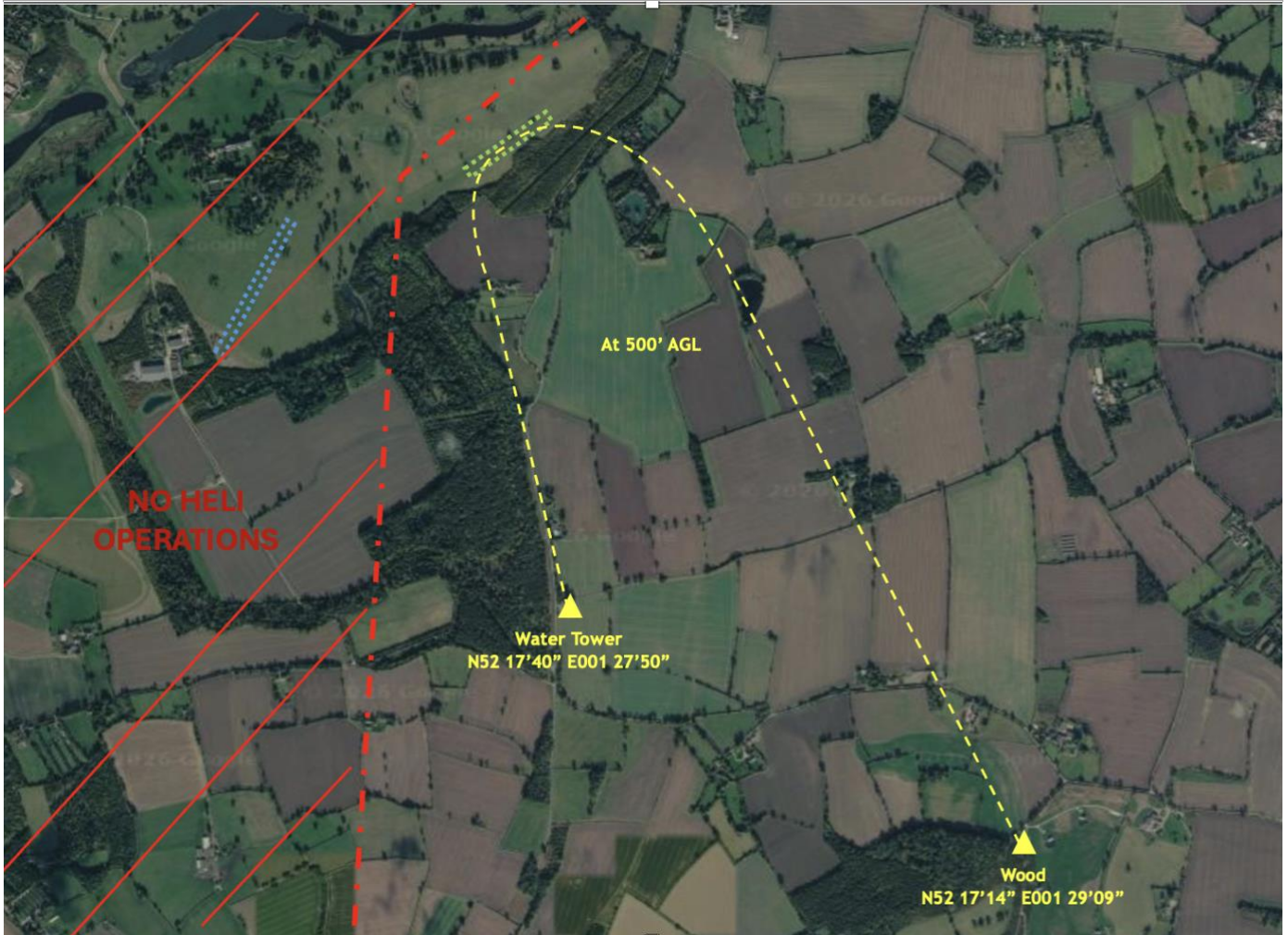
**PROCEDURES:**

- All joins are to be flown at 500ft AGL:
  - Rwy 06 – via Water Tower VRP (N52 17'40" E001 27'50")
  - Rwy 24 – via Wood VRP (N52 17'14" E001 29'09")
- All departures are to be flown at 500ft AGL:
  - Rwy 06 – via Wood VRP (N52 17'14" E001 29'09")
  - Rwy 24 – via Water Tower VRP (N52 17'40" E001 27'50")
- In the event of go around turn immediately south toward outbound VRP and rejoin.
- All inbound aircraft should remain clear of VRPs until 2-way communication is established on Heveningham Radio, giving ac registration and arrival details. **Do not proceed** without 2-way communication.
- All joins from the south only, to achieve safe separation with FW operations to the north and west.
- Air taxi to Heli Parking, following marshaller guidance at all times.
- After parking, report to marshaller for entry ticket scan.
- Tiedowns, chocks and covers are to be provided by individual crew.
- Helicopters must not start engines or taxi from parking areas without contacting Heveningham Radio.
- Arrivals/Departures: 10.00-18.00, daily. **Not permitted** during Air display 15.30-16.00.

**HAZARDS:**

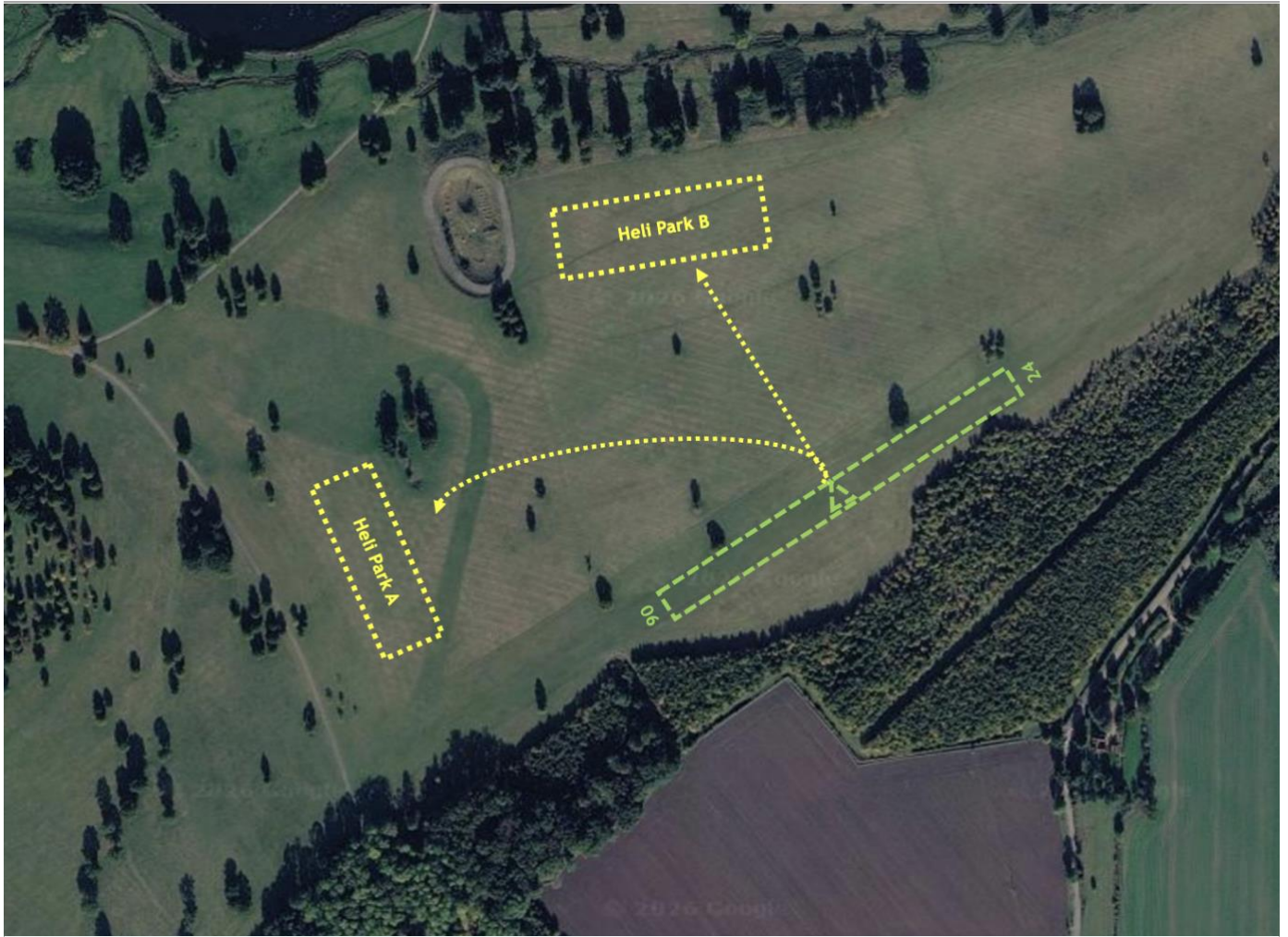
- **AVOID OVERFLIGHT OF ALL LOCAL VILLAGES.**
- FW circuit height is 1000ft QNH, with circuits to the north.
- CAUTION: Rwy 03/21 is in the Rwy 06 undershoot/Rwy 24 overshoot.
- Soft ground immediately west of Rwy 06 Threshold.
- Established mature tree line to south and isolated established trees to the north.
- Exercise caution regarding rotor-wash with respect to other aircraft and crews.

## Helicopter FATO Join/Departure



See next page for 'Helicopter Parking'

## Helicopter Parking



End